

HISTORIC OTTERBEIN

[Return to the Otterbein History Page](#)

Camden Yards, Then and Now

by David Safier

In 2022, Oriole Park at Camden Yards turned 30. In what was a bold architectural choice when it was built, the designers of the park decided to incorporate the old B&O Warehouse into the ballpark rather than tearing it down. As a result, the stadium preserves some of the look and feel of its urban setting. It cost more to get the warehouse back in shape than it would have cost to tear it down, but the design was so successful, it influenced the way stadiums are built around the country..



[Photo by Chris6d](#)

That's the old warehouse behind right field. It's what you see when you approach the stadium from the Otterbein neighborhood.

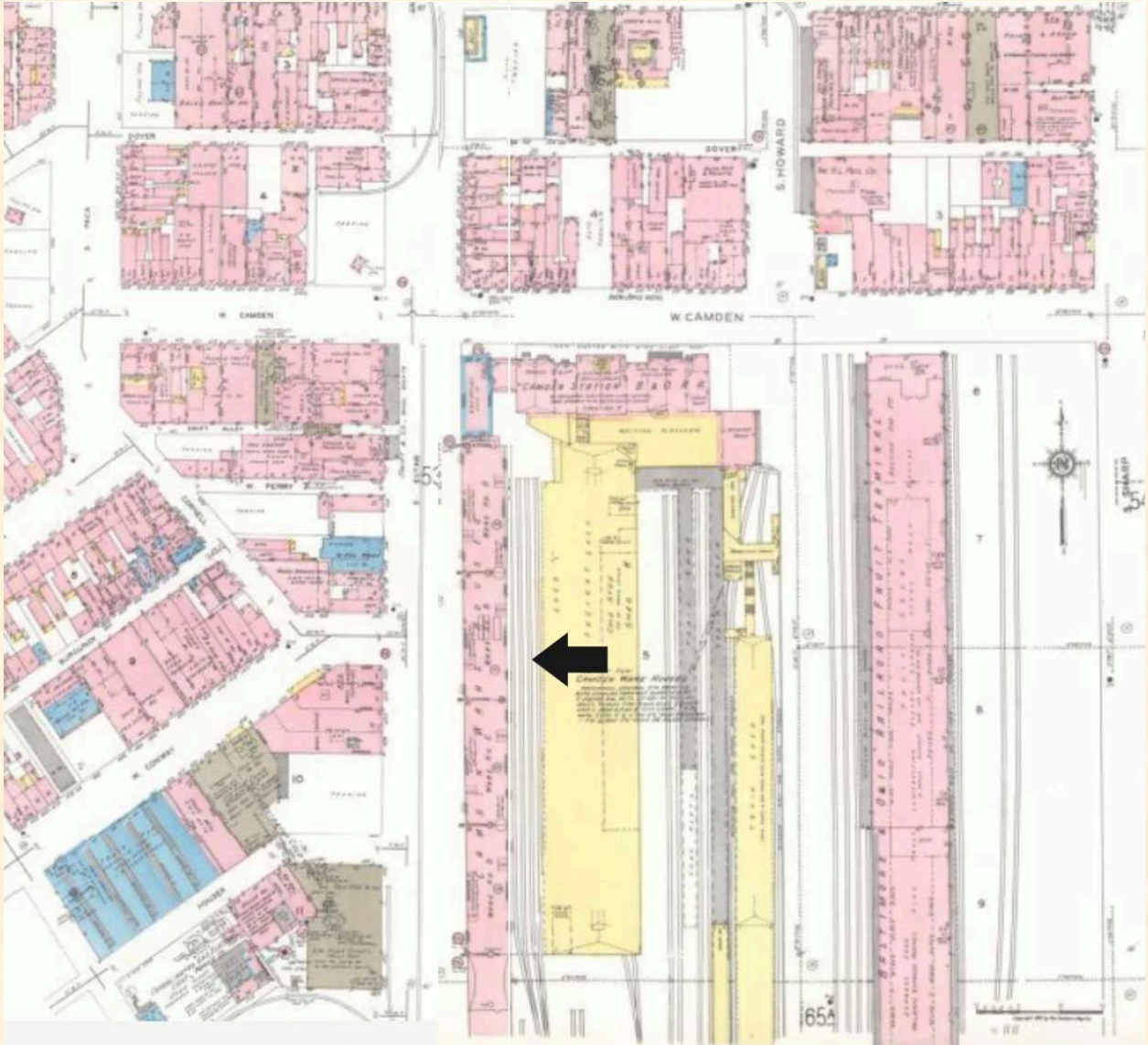
Construction on the B&O Warehouse began in 1899. It was in active use until the 1960s, abandoned by the 1970s and ready for demolition by the time the new stadium was in the planning stage in the 1980s.

Scroll down for a photo and some maps showing the area before and after the stadium was built.

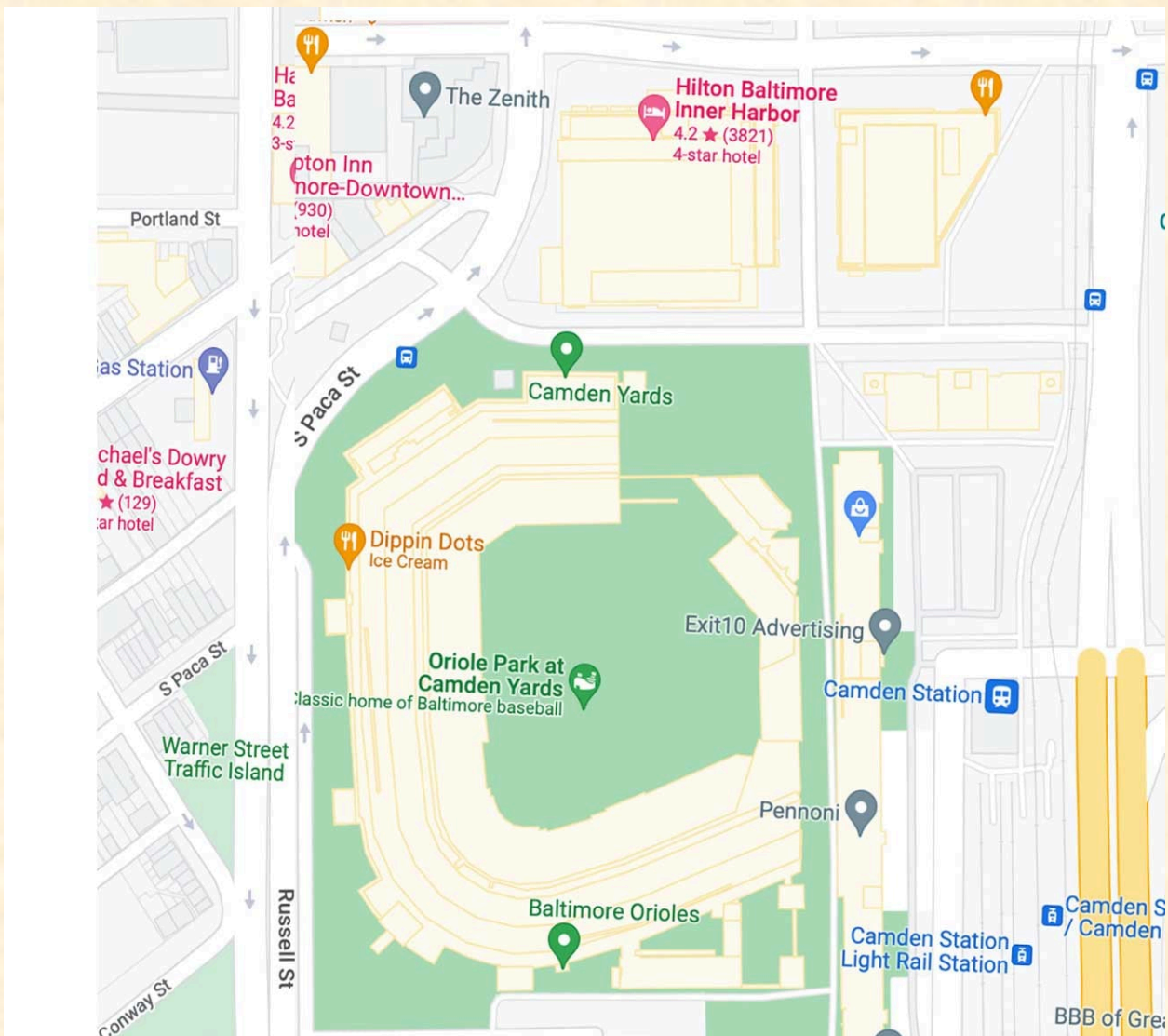


A photo of the area before the stadium was built.

HISTORIC OTTERBEIN



A street map from the 50s with arrow pointing to the B&O Warehouse.



A current Google map of the area.

HISTORIC OTTERBEIN



An overlay of Orioles Stadium on top of the 1950s map.